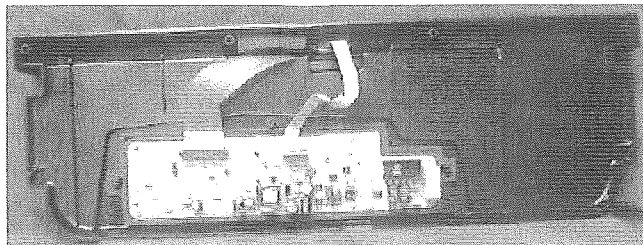
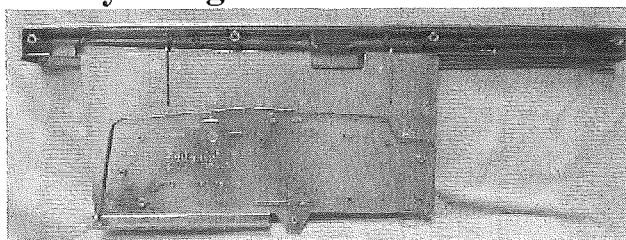


154 039207

Instructions for replacing console on Fully Integrated Dishwashers



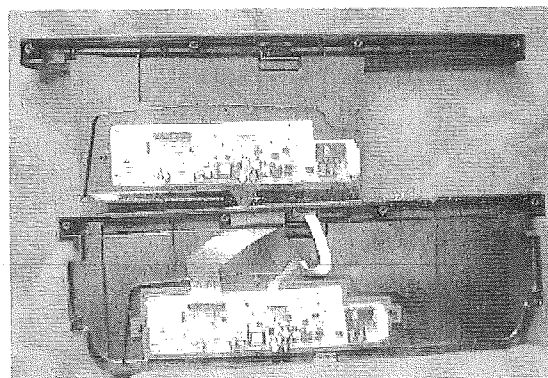
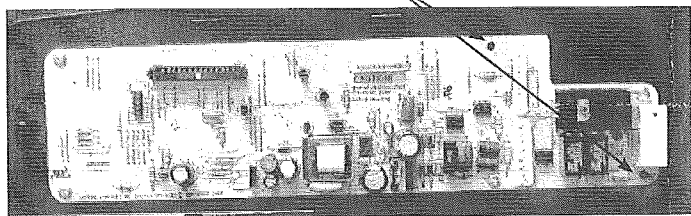
Original console with control mounted



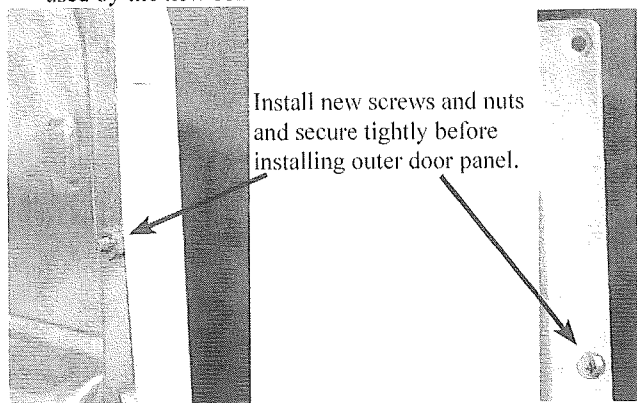
Replacement console

1. Remove power from dishwasher.
2. Remove outer door panel by removing the bottom two screws, one on each side of inner door panel, press down on outer door panel to remove. Set aside until repair is completed.
3. Remove the six screws mounting console to inner door panel.
4. Remove control cover and set aside. Lift ribbon lock and remove ribbon from control. Unplug display ribbon from control. Wire harness to control can be removed if this makes replacement easier. Remove control from console and place console on protective pad to remove display out the front and transfer to new console.
5. Remove control cover gasket and install on new console. Install control on new console not all of control mounting screws will be needed on new console.

These screws are not reused when mounting control on new console



6. Reinstall harness from display to control, make sure harness locks down onto the control properly
7. Clean new ribbon from keypad before installing onto control To install ribbon make sure the two pins on the control ribbon lock are in the two holes in the ribbon before lock is set. After lock is set pull up on ribbon to make sure it is in and locked securely.
8. To install control cover make sure harness grommet is all the way into the cover before mounting cover. Mount cover.
9. Place console onto inner door panel with the 4 top mounting screws.
10. The new console does not use the lower two screws. Two new screws and nuts are provided to fill the holes in the inner door panel not used by the new console.



11. To install outer door panel line up holes on the panel onto the locking hooks on the inner panel and slide outer panel up to lock in place. Install the two outer door panel mounting screws.
12. Re connect power and check operation of new key pad and dishwasher