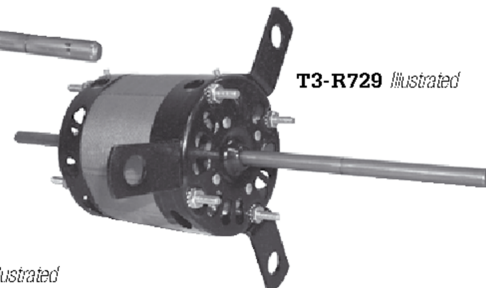
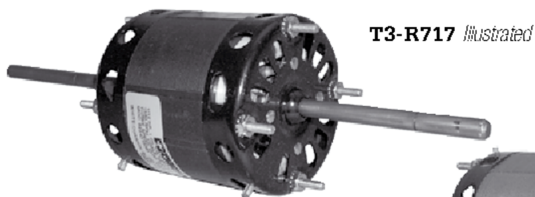


Window Air Conditioner Motors

- 1/12 HP • 1550 RPM • 120 Volts • 3 Speed • Double Shaft • CCW Rotation
- Shaded Pole • Open Construction • Sleeve Bearing

Part #	Amps	Shaft
T3-R717	2.30	5.0" x 5/16" x 3.5"
T3-R729	2.30	3.5" x 5/16" x 5.0"

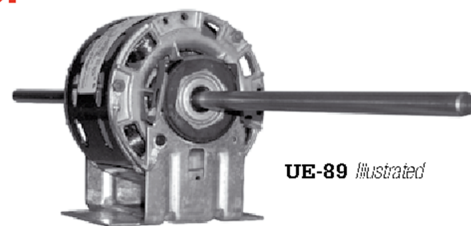


T3-R701 *Illustrated*

REPLACEMENT FOR: Window Air Conditioners

5.0" Diameter Incremental / PTAC Fan & Blower Motors

- 1/10 HP • 42 Frame • CCW Rotation • Double Shaft
- Open Construction • Sleeve Bearing • Base Inc.



General Replacement For: Carrier, Chromalox, Trane, Dunham Bush

Part #	RPM	Volts	Amps	Type	Shaft	Cross Reference
M4-R2634	5/1050	120	3.50	SP	10.2" x 1/2" x 10.2"	UE89, GE 2089, Fasco D289
UE-89	5/1050	120	3.50	SP	10.2" x 1/2" x 10.2"	GE 2089, Fasco D289
M4-R2693	5/1050	120	3.20	SP	8.0" x 3/8" x 8.0"	UE93, GE 2093, Fasco D293
UE-93	5/1050	120	3.20	SP	8.0" x 3/8" x 8.0"	GE 2093, Fasco D293
M4-R2635	4/1050	208/230	1.60	SP	9.0" x 1/2" x 9.0"	UE320, GE 2907, Fasco D251
M4-R2362*	4/1075	120	1.70	PSC	9.8" x 1/2" x 9.8"	UE362, GE 2362, Fasco D291
M4-R2381*	4/1075	208/230	0.80	PSC	9.0" x 1/2" x 9.0"	UE381, Fasco D292

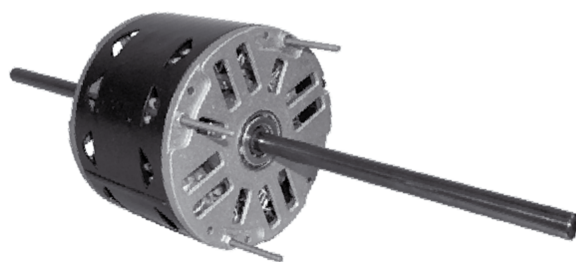
* - PSC - 5/370 Cap.

5.5" Diameter Air Conditioning Motors

- 48 Frame (5 5/8") • 1075 RPM • 3 Speed • CCW • PSC • Open • Sleeve Bearings • Resilient Ring
- 1 1/2" thru Bolt Mount with Length Adaptor • Fixed Lead End • Thermal Protection • Adjustable Base Inc.

Part #	HP	Volts	Amps	Cap	Shaft
M1-R52126	1/6	120	3.10	5/370	7.5" x 1/2" x 8.2"
M1-R52114	1/4	120	4.40	5/370	6.3" x 1/2" x 6.5"
M1-R52101	1/3	120	6.80	5/370	6.8" x 1/2" x 8.0"
M1-R52761	1/2	120	7.60	7.5/370	6.8" x 1/2" x 7.4"
M1-R52118	1/6	208/230	1.20	5/370	7.5" x 1/2" x 8.2"
M1-R52113	1/4	208/230	1.90	5/370	7.5" x 1/2" x 8.0"
M1-R53676*	1/4	208/230	1.90	5/370	7.5" x 1/2" x 8.0"
M1-R52102	1/3	208/230	2.60	5/370	7.8" x 1/2" x 8.3"
M1-R53686*	1/3	208/230	1.90	5/370	7.8" x 1/2" x 8.3"
M1-R52107	1/2	208/230	3.40	7.5/370	7.7" x 1/2" x 6.2"
M1-R53696*	1/2	208/230	2.76	7.5/370	7.7" x 1/2" x 6.2"
M1-R52489	3/4	208/230	5.00	7.5/370	6.8" x 1/2" x 7.5"

* No Adapter Kit Base



**REPLACEMENT FOR:
Large Window and
Through The Wall
Air Conditioners**