

Reversomatic Ventilation Fan Motors & Kits

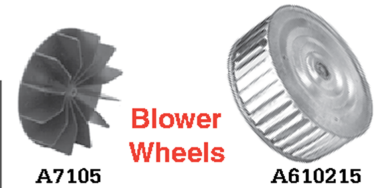
Exhaust Fan Motors, Blowers, Brackets & Wheels

- 115 Volt
- Shaded Pole
- CW Rotation
- Blowers include motor, bracket & blade.

Motor Part #	Fig.	Blwr. Part #	Fig.	HP	Amps	RPM	CFM	Shaft	Bracket #	Blower #	Dia.	Width	Bore	Rot.
R630	4	RB20	1B	1/35	0.76	1/1550	60	1.90"x7/32"	A8600	A7105	5"	1 1/8"	7/32"	CCW
R260	5	RB22	2B	1/90	0.60	1/1550	75	1.10"x5/16"	A8602	A508202	5 1/16"	2"	5/16"	CCW
R261	5	-	-	1/200	0.31	1/1550	77	1.75"x5/16"						
R262	5	RB24	2B	1/40	1.10	1/1550	116	1.80"x5/16"	A8602	A508216	5 1/16"	2 5/32"	5/16"	CCW
		RB25	2B				130							
R264	6	RB26	2B	1/75	0.70	1/1550	141	2.00"x5/16"	A8604	A610215	6 1/16"	2 5/32"	5/16"	CCW
R265	5	-	-	1/90	0.65	1/1400	115	1.60"x5/16"						
R266	6	RB28	2B	1/20	1.45	1/1550	201	1.40"x5/16"	A8604	A610215	6 1/16"	2 5/32"	5/16"	CCW
R267	5	-	-	1/50	0.85	1/1550	118	1.50"x5/16"						
R2602	7	RB29	3B	1/35	1.15	1/1550	268	2.20"x1/2"	A8606	A610220	6 1/16"	2 5/32"	1/2"	CW
R2603	7	RB30	3B	1/35	1.15	1/1550	268	2.20"x1/2"	A8606	A610220	6 1/16"	2 5/32"	1/2"	CW
R2604	7	-	-	1/10	2.87	1/1550	300	2.00"x1/2"						
R2605	7	-	-	1/12	3.0	1/1050	450	1.60"x1/2"						

Comment

Motor Part #	Blower Part #	Comment
R630	RB20	013005, EB50
R260	RB22	B60, 013012, EB60
R261	-	QB60-80
R262	RB24	B100, K100
	RB25	
R264	RB26	QK100, 013020
R265	-	QB100
R266	RB28	BK100, 013024
R267	-	BB-100, 013019
R2602	RB29	SAME AS RB30 BUT OPPOSITE ROTATION
R2603	RB30	DK260, DB200, FRANKLIN 75003, 013041, 013040
R2604	-	DB300, 013062
R2605	-	QBD300



A7105

Blower
Wheels

A610215

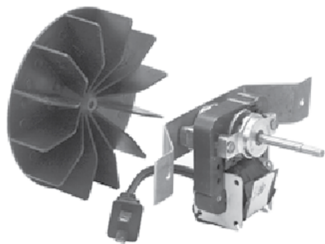


Figure 1B
RB20



Figure 2B
RB24
RB22
RB25
RB26
RB28

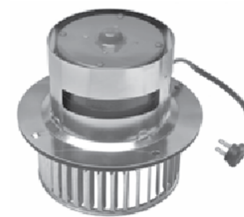


Figure 3B
RB30
RB29



Figure 4
R630



Figure 5
R262
R260
R261
R265
R267



Figure 6
R264
R266



Figure 7
R2605

Shaft length measured from hub face to shaft end

Rotation determined opposite shaft end
Double shaft determined at lead end