

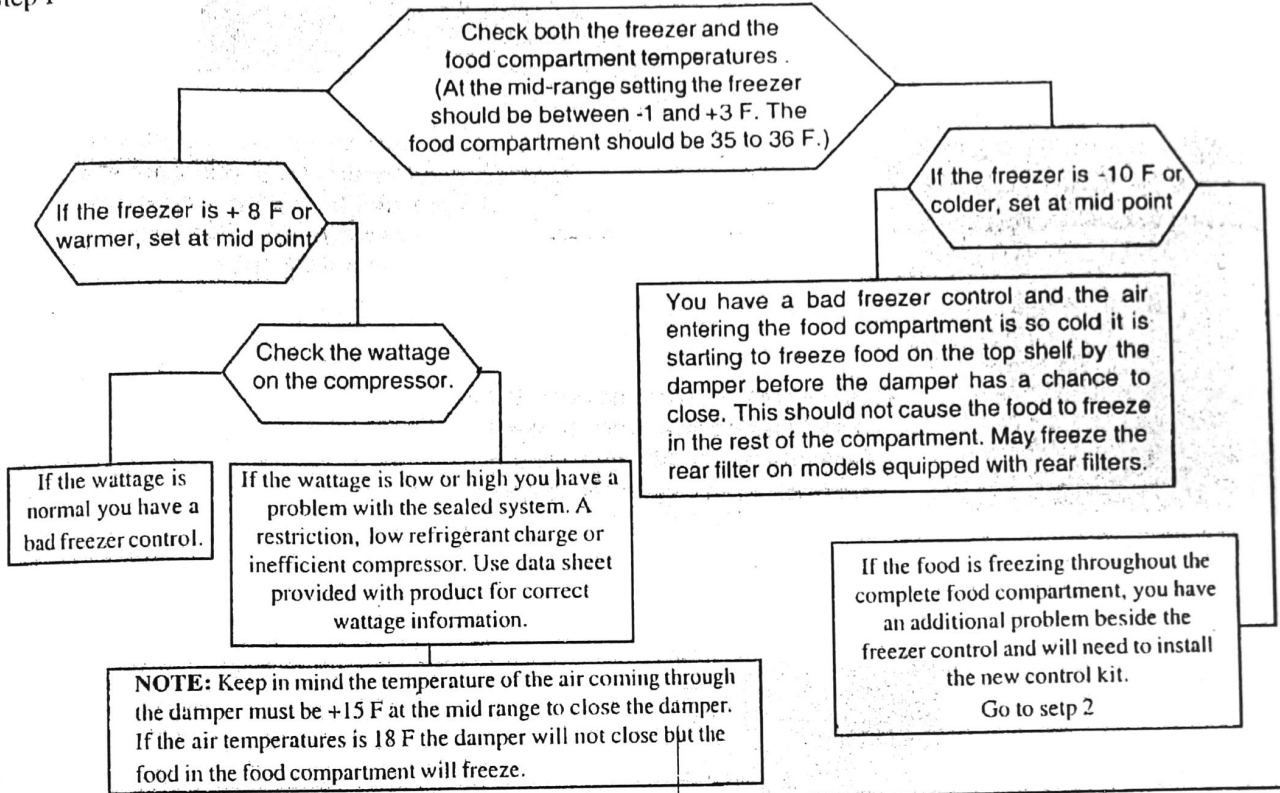


ELECTROLUX HOME PRODUCTS NORTH AMERICA

DAMPER AND CONTROL KIT PART NUMBER 5303918282 FOR THE 2001 SIDE BY SIDE REFRIGERATORS

Contents of kit: 1 - Back section of control box with all parts installed, 1 - socket to remove screws
This kit is for models with a Adaptive Defrost control.

Step 1



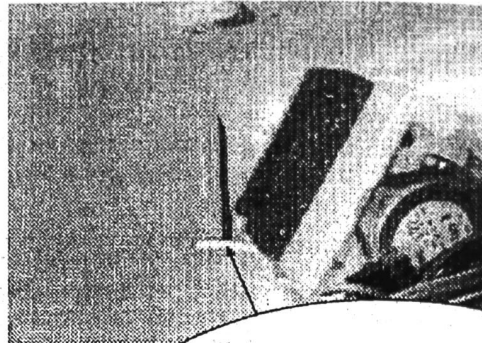
Step 2 To replace the damper and control kit;

1. Remove the screws holding the control panel in place.
2. Remove the water lines from the filter, (front filter models only).
3. Disconnect the plug from the top of the liner
4. Slide the freezer control cap tube out of the guide tube and remove the control panel assembly.
5. Remove the knobs, push out on the release tab and lift the food and freezer compartment control out of the front section of the housing.
6. Remove the wires from the light socket.
7. Separate the front section of the control box from the back section.
8. Attach the new back section of the control box the front connect the light socket.

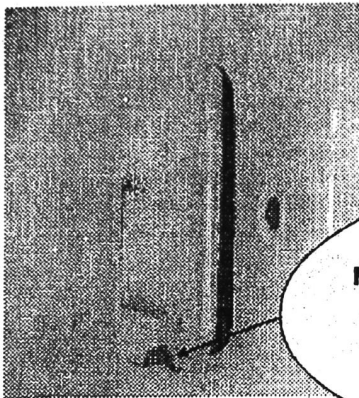
NOTE: On models equipped with a heater on the freezer control cap tube it will be necessary to transfer the heater from the old freezer control the freezer control in the new kit and plug it in to the connector provided

NOTE: Use caution to place the cap tubes from both controls so they do not touch the terminals on the defrost control and that the cap tube for the freezer control is installed correctly in the opening in the liner, see figures or page 2.

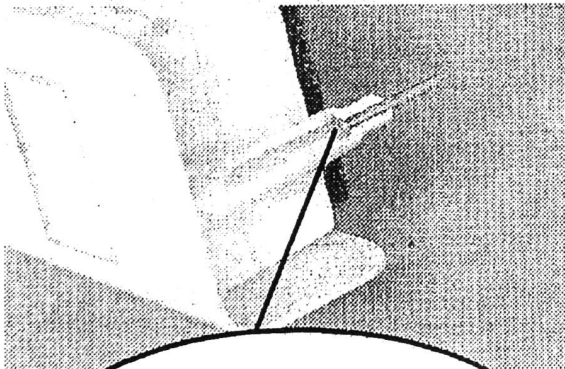
9. Reinstall the control box in the top of the food compartment making sure the freezer cap tube is inserted all the way into the pilot tub in the freezer. Make sure the control box back screw is install all the way and the control box is touching the liner in the left rear corner see figures on page 6.



When the control box assembly is removed make sure that the white plastic capillary tube cover is removed along with the capillary tube

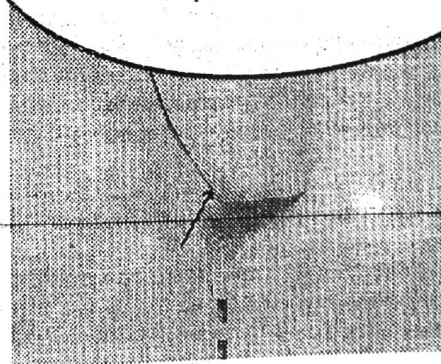


Make sure that the capillary tube is not kinked and that it goes through the small hole in the damper opening of the fresh food liner.



When the control box assembly is reinstalled make sure the screw in the back of the control box is all the way in and tight (Use tool provided)

When the control box is installed properly the housing will be touching the food compartment liner



INSTRUCTIONS FOR MODIFYING ELECTRICAL CONNECTIONS WHEN REPLACING A GE COLD CONTROL WITH A FOSHAN COLD CONTROL

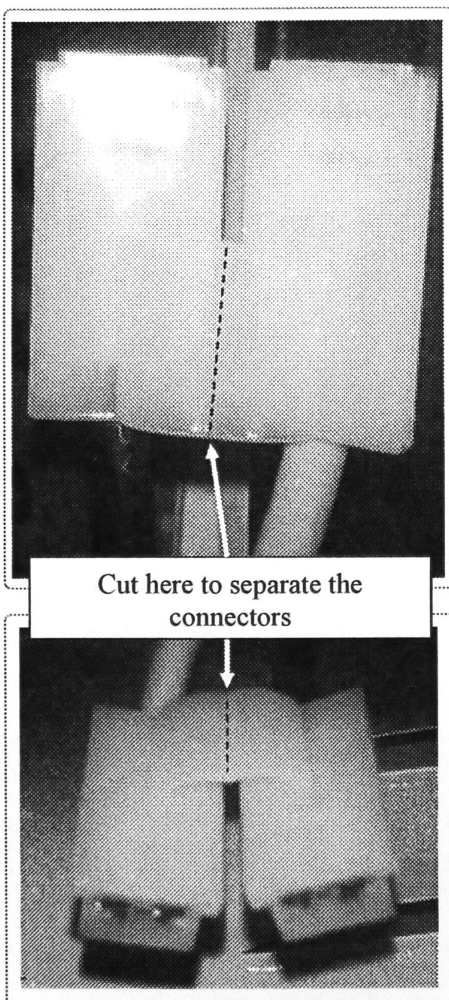
Components:

Existing wiring harness connecting to new cold control part numbers 2167877, 2162304, and 2167146.

This instruction shows how to modify the existing electrical connector when changing from the previous GE cold control to the new Foshan cold control.

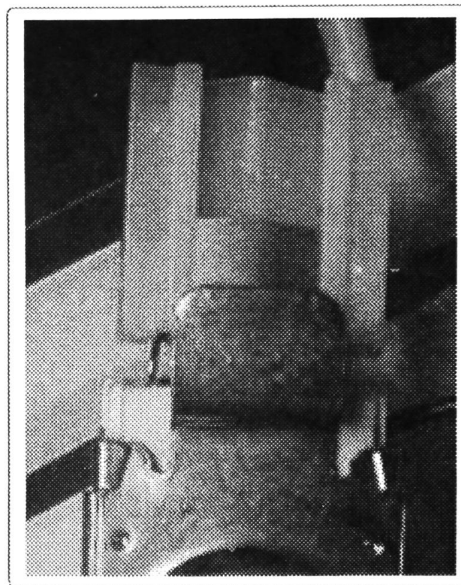
To modify the electrical connector:

1. Separate the connectors.

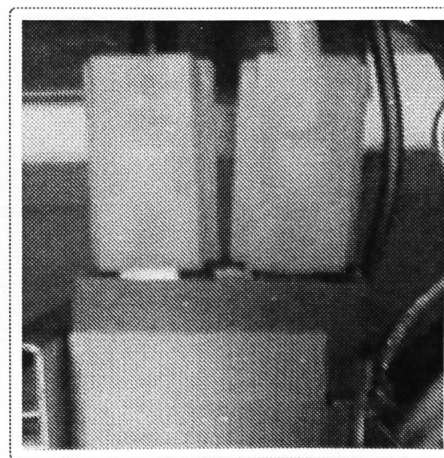


2. The connectors are now ready to install onto the new Foshan cold control unit.

3. Original configuration



4. Connections will look like this after installation on the Foshan control:



We strive to provide clear and accurate service instructions. If you found any portion of this document to be unclear or inaccurate, or if you have suggestions for improvements please let us know. Contact us at 1-888-842-3660 or suggestions@electrolux.com