

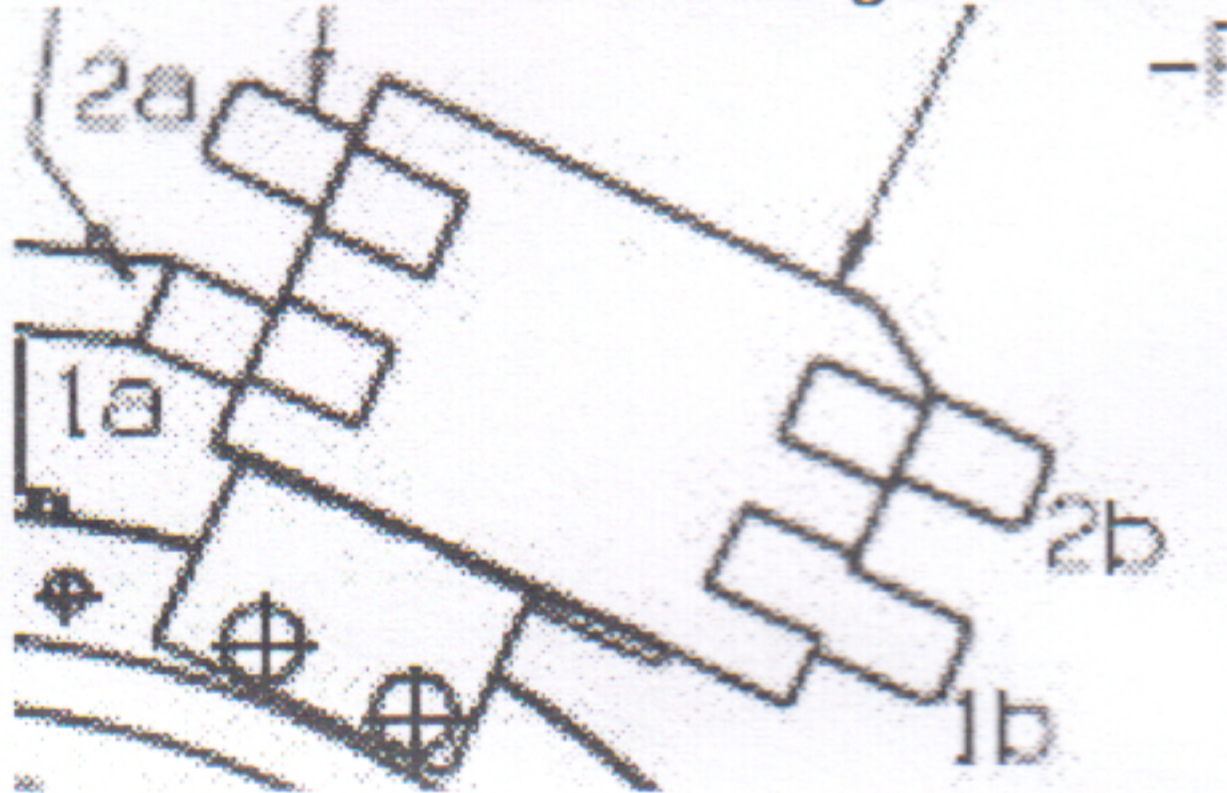
Element Service Kit #903118

This kit contains:

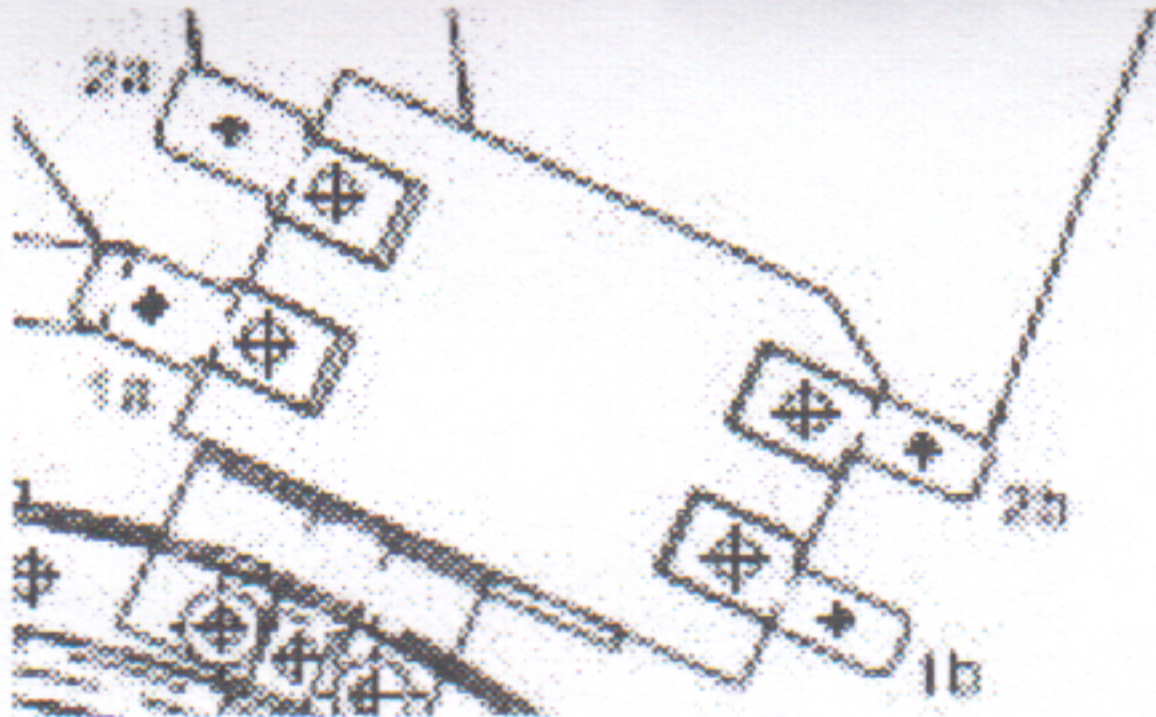
- 1x Element Assembly
- 2x Wires
- 2x Wire nuts
- 1x Instruction sheet

This element is changed with a new one equipped with different tabs. The previous element was equipped with tab adapted for a connector fast-on type 0.250x0.032 and the new element with 0.187x0.032 as shown in these 2 pictures:

Old Element with the big tab identified 1b and 2b.



New element with the smaller tab identified 1b and 2b.



To install the new element, we need to use the service kit provided with the new element. The fast-on connector plugged in the tab 1b and 2b needs to be cut and these 2 wires needs to be joined with the one provided in the service kit with the two wire nuts.

For the wire nut connection, we need to strip the wire from the cooktop and the one provided in the service kit 3/8" (1 cm). After, we push the two wires inside the wire nut and turn the wire nut clockwise until tight. **DO NOT TWIST THE WIRES TOGETHER BEFORE INSTALING THE WIRE NUT.**

The other connection remains the same.